

## Worksheet 8 -Escher's exciting cinemas

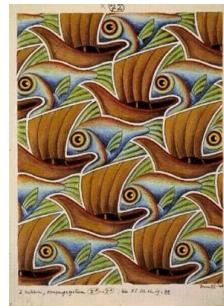
**Work in pairs! Collect other Escher mosaics in which he used the shifting of shapes !** Make sure that the information is authentic and that you collect the original paintings of the artists and not drawings or souvenirs inspired by the works ! Make a collection of pictures from what you have collected!

**Have a look at the following works!**



M.C. Escher: Hourse and bird

[https://arthive.com/escher/works/200368~Pegasus\\_No\\_105#show-work://200394](https://arthive.com/escher/works/200368~Pegasus_No_105#show-work://200394)



M.C. Escher: Fish and boat

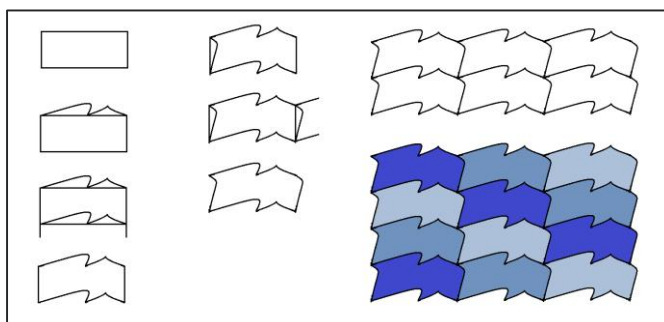
[https://arthive.com/escher/works/200368~Pegasus\\_No\\_105#show-work://200412](https://arthive.com/escher/works/200368~Pegasus_No_105#show-work://200412)



M.C. Escher: Scheme

<https://www.anitasfeast.com/blog/2013/09/the-haques-escher-in-het-palais/>

**Work individually! Make a more complex drawing similar to Escher's mosaics.** The following example will help you. Use the following functions of the graphics program: apply rectangle, draw curve, copy, decide, eraser, fill, colour shades. Draw a mosaic where 2-2 opposite sides of each piece have the same curve, so that the pieces can be shifted vertically and horizontally.



**Rate the works of art!** Make a collection of pictures together, discuss which mosaic is exciting or particularly well done!