

Worksheet 5 - Vasarely and Andrade and curved surfaces

Work in pairs! Collect images of Vasarely and Andrade from the internet where they use curved lines to represent spatiality. Make sure that the information is authentic and that you collect the original paintings of the artists and not drawings or souvenirs inspired by their works! Make a collection of pictures from what you have collected!

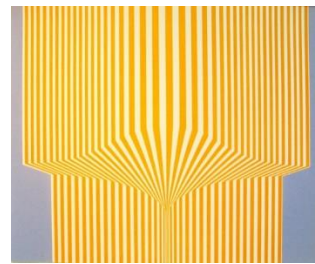
Have a look at the following works!



<https://www.artnet.com/artists/victor-vasarely/zebra-6NJUavXRhgsEJKBb16T-ng2>



<http://www.artnet.fr/artistes/victor-vasarely/sir-ris-n%C3%A9gatif-15IkPonjQw8wF6pkKd4rkQ2>

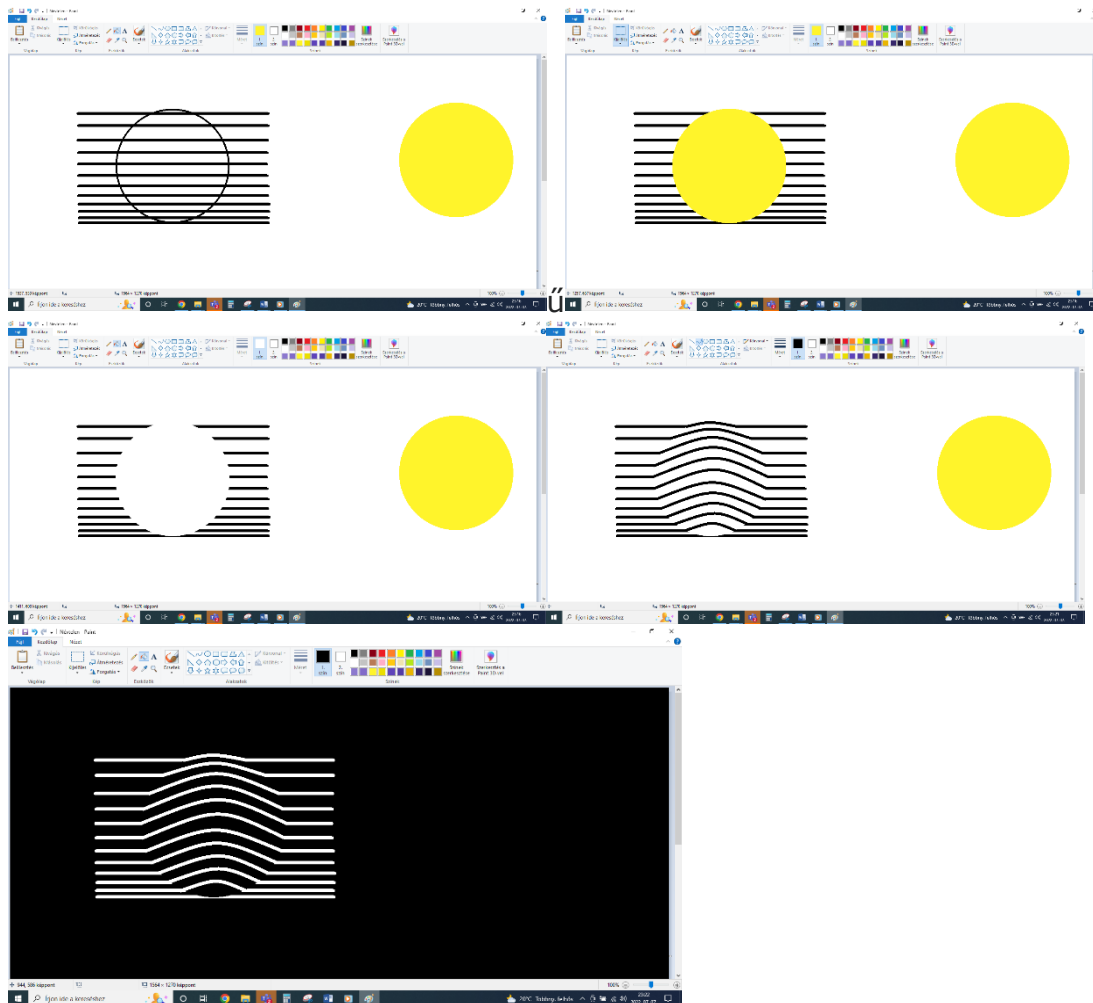


Edna Andrade: Orange
cizoid

<https://www.wikiart.org/en/edna-andrade/orange-cisoide-1971>

Work individually! Make a similar drawing! The following example will help you.

Use the following functions of the graphics program: draw curve, shape curve, eraser, fill in.



Rate the works of art! Create a common Google form, upload the drawings for each question and set a scale of 1-10 for the evaluation! All of you rate each other's work by filling in the Google Form!