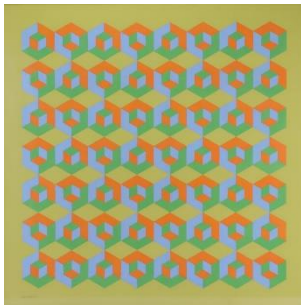


Worksheet 2 - Vasarely, Andrade and axonometry

Work in pairs! Collect images of Vasarely and Edna Andrade from the Internet, showing a variety of cubes depicting larger and more complex surfaces⁴! Make sure that the information is authentic and that you collect the original paintings of the artists and not drawings and souvenirs inspired by their works! Make a presentation or montage of what you have collected!

Have a look at the following works!



Edna Andrade: Jumping blocks 2

<https://www.invaluable.com/auction-lot/edna-andrade-1917-2008-3302-c-fdd440396f>



Victor Vasarely: Untitled 21

<https://en.wahooart.com/@/8EWS5V-Victor-Vasarely-Untitled-21>



Victor Vasarely: Olympiad

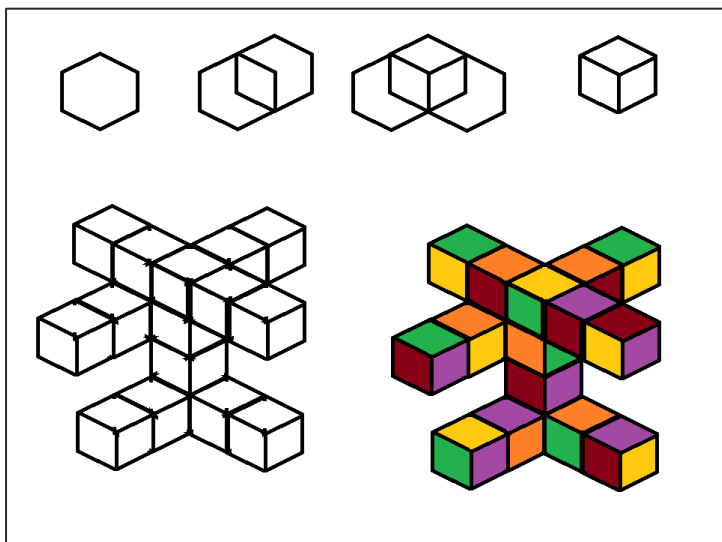
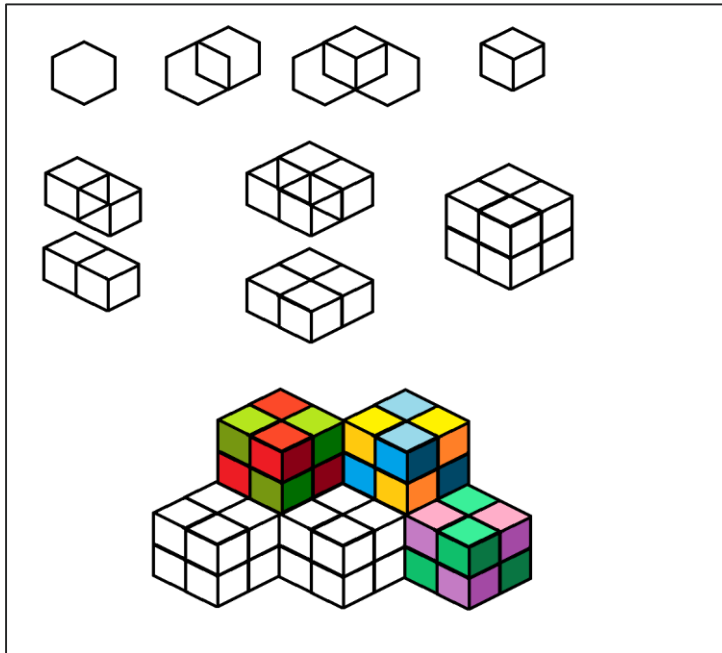
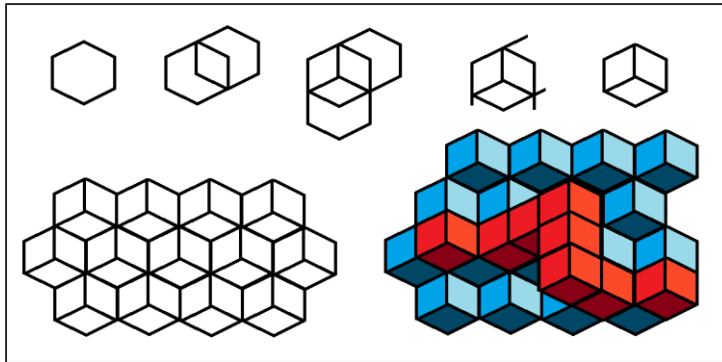
<https://www.meer.com/en/14899-optical-spaces-the-art-of-victor-vasarely>



Victor Vasarely: Duo-2

<https://en.artsdot.com/@/7ZCN6B-Victor-Vasarely-Duo-2>

Work individually! Make a similar drawing! The following examples will help you solve the problem. Use the following functions of the graphics program: apply regular hexagon, fill, copy, eraser, define custom colours.



Rate the works of art! Create a common Google form, upload the drawings for each question and set a scale of 1-10 for the evaluation! All of you rate each other's work by filling in the Google Form!