

Dunguaire Project



Description

The Dunguaire castle, known as the Kinvara jewel, is located in Ireland, between Galway and Limerick. It is one of the most visited castles of this country, surrounded by amazing landscapes and with privileged views of the Galway and Kinvara bay.

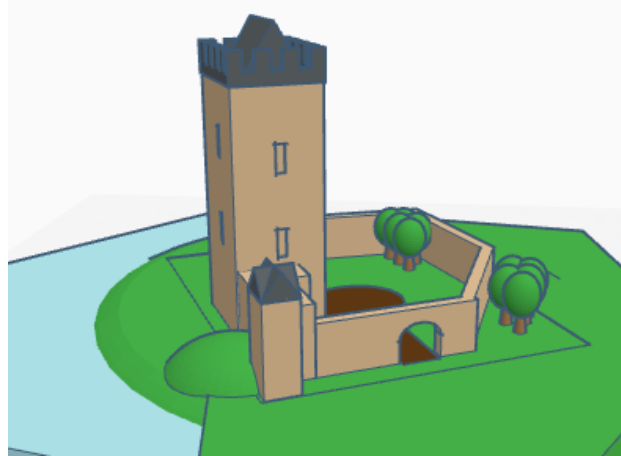
Its creation is dated on the XVI century, becoming one of the most ancient castles in Ireland and it has such a great conservation status.

In this project, we are going to shape this superb castle, adding details and customizing our design with the landscape that surround it.

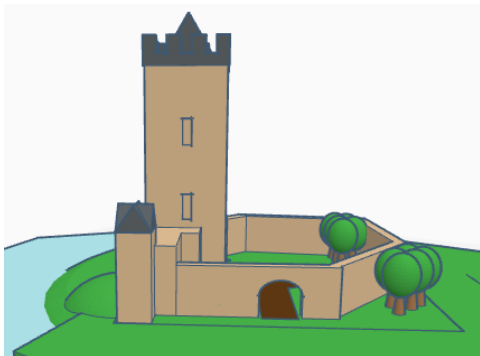
Objectives

- Search information about the castle size and plan
- Strengthen the basic Tinkercad controls such as movement, scale and rotation.
- Create a landscape using all kinds of Tinkercad objects

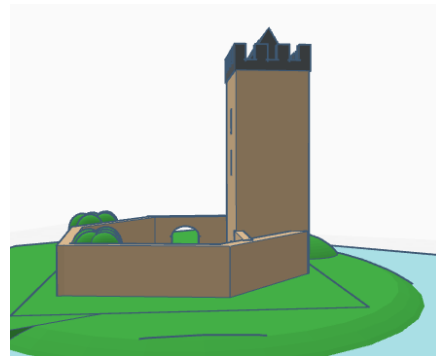
Reference model designed in Tinkercad



Front view



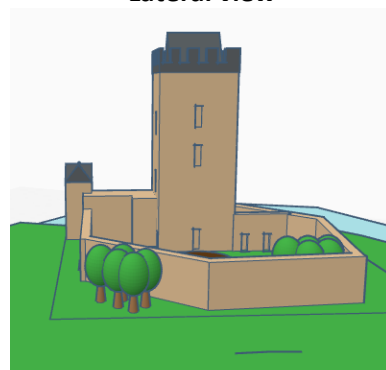
Rear view



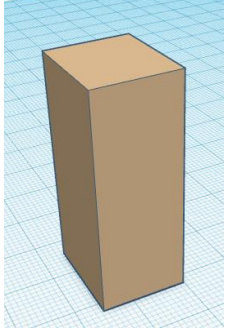
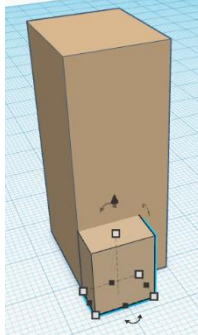
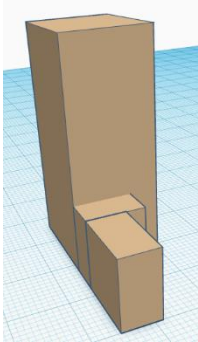
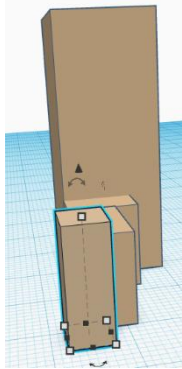
Lateral view

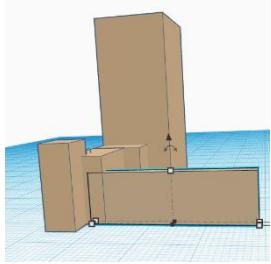
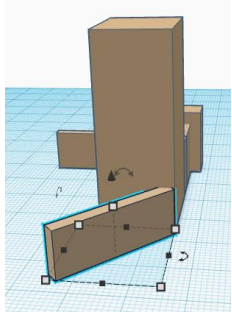
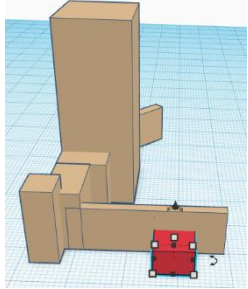
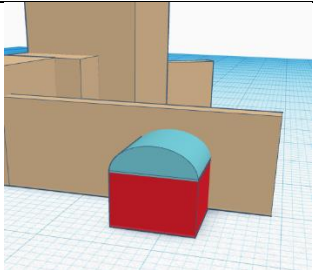


Lateral view

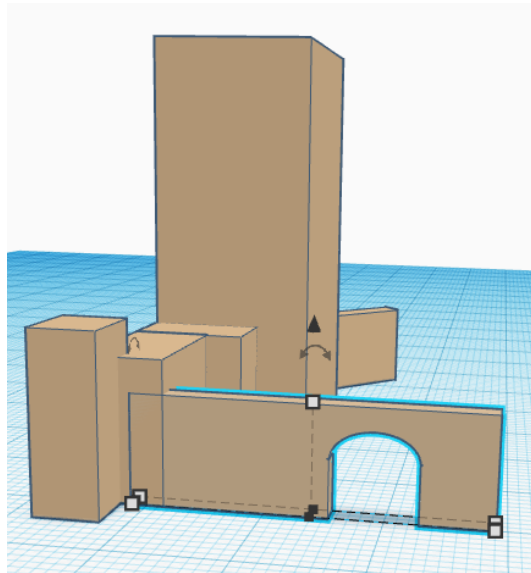


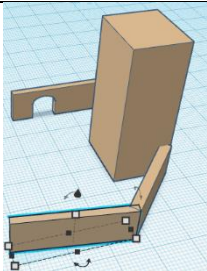
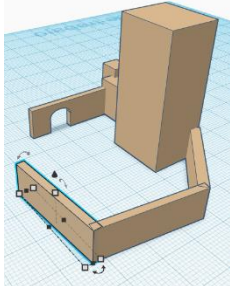
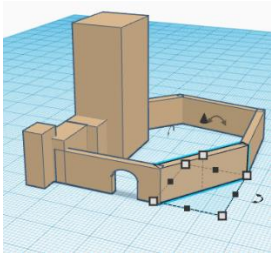
Technical data sheet of the castle

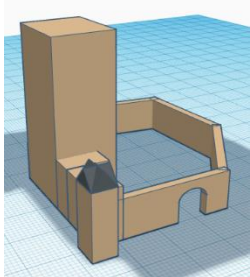
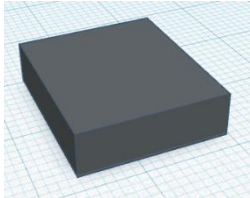
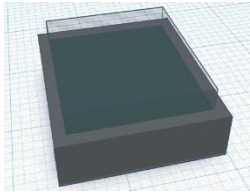
3D object	Size	Image
Cube	15mm wide x 18mm long x 40mm high	
Cube	10mm wide x 6mm long x 12.5mm high	
Cube	7mm wide x 12mm long x 12.5mm high	
Cube	5.50mm wide x 6.50mm long x 15.5mm high	

Cube	30mm wide x 2mm long x 9.5mm high	
Cube	3.5mm wide x 27mm long x 9.5mm high	
Cube	7.6mm wide x 9mm long x 5mm high	
Curve roof	7.6mm wide x 9mm long x 2.5mm high	

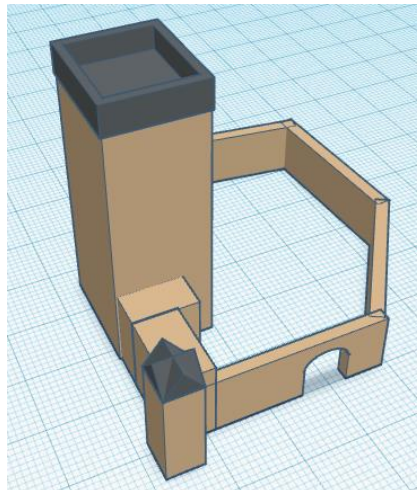
We group the last two 3D objects to shape the castle entrance.

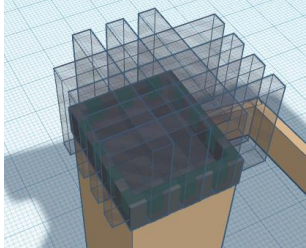


3D object	Size	Image
Cube	30mm wide x 6mm long x 9.5mm high	
Cube	4mm wide x 30mm long x 9.5mm high	
Cube	2.50mm wide x 28mm long x 9.5mm high	

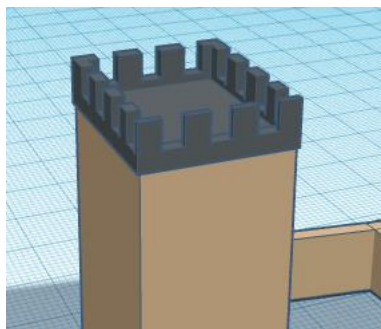
Roof x 2	5mm wide x 6mm long x 3.5mm high	
Cube	16mm wide x 19mm long x 4.5mm high	
Cube (Empty)	13.5mm wide x 15.5mm long x 6mm high	

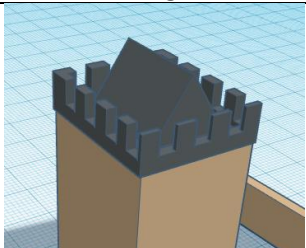
We group the last two cubes and put them above the principal tower of the castle.



3D object	Size	Image
Cube x 7 (Empty)	22mm wide x 2.15mm long x 10mm high	

We group these 7 cubes with the principal tower roof to get this result:



3D object	Size	Image
Roof	10mm wide x 12mm long x 7.5mm high	

Finally, we have the Dunguaire castle structure made, it is up to you how you customize the castle and the landscape by using everything you want from Tinkercad.

We decided to add windows, trees and the landscape that surrounds the castle.

